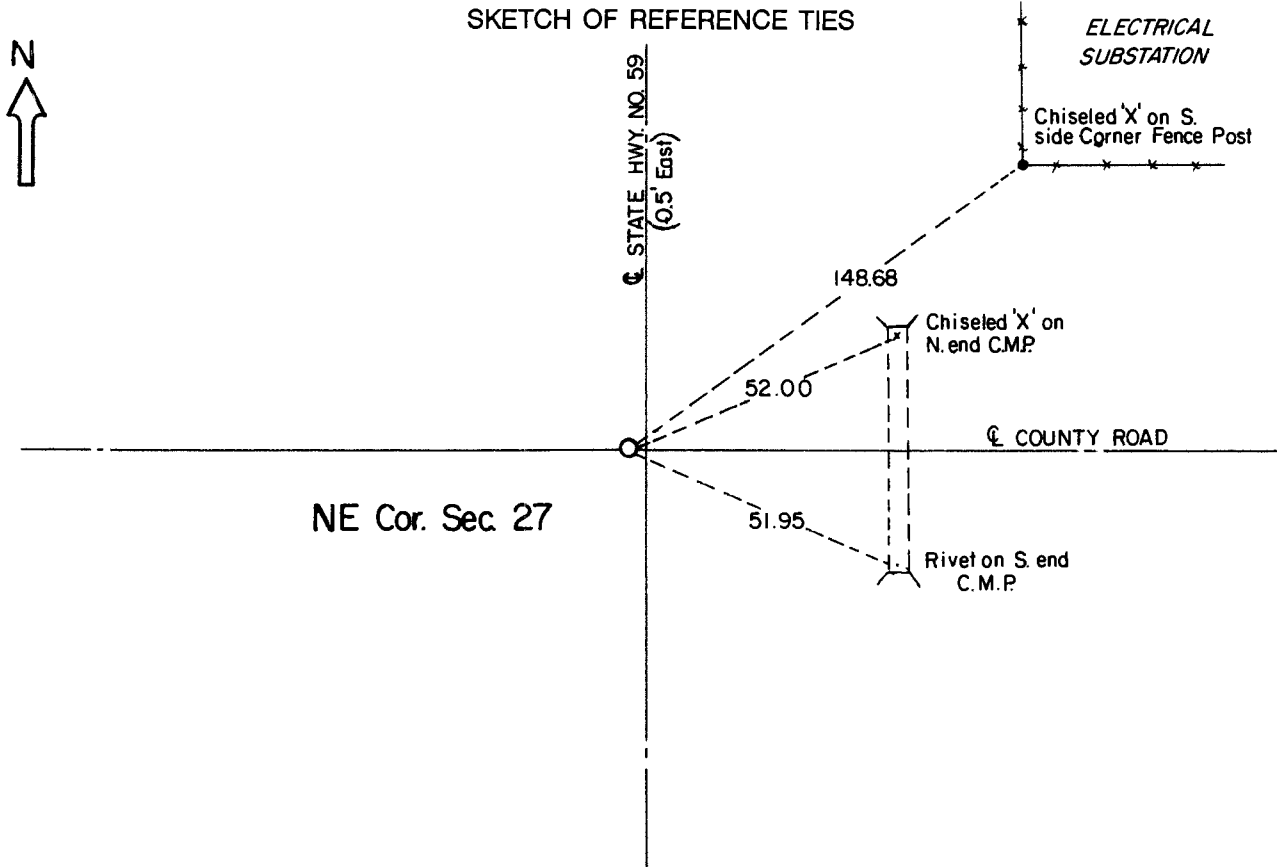


# CERTIFICATE OF LOCATION OF GOVERNMENT CORNER

**Northeast** Corner of Section **27** , Township **108** , Range **41** 5th P.M.  
STATE OF MINNESOTA, County of Murray.

**Statement:** Aug. 30, 1989 - Found Brass Rod in old concrete pavement placed by the Minnesota Department of Highways in 1931.



Statement of evidence relative to this corner location is on the back of page.

I hereby certify that this document and the data contained herein was prepared by me or under my direct supervision and that I am a duly Registered Land Surveyor under the laws of the State of Minnesota.

*Duane A. Bonnema*      Nov 6, 1989  
Duane A. Bonnema      Date

Minnesota Registration No. 14895

OFFICE OF THE COUNTY RECORDER  
COUNTY OF MURRAY      **NOV 15 1989**

I hereby certify that this document was filed in the County Recorder's office at \_\_\_\_ M. on the \_\_\_\_ day of \_\_\_\_\_ A.D., 19 \_\_\_\_

County Recorder *[Signature]*  
By \_\_\_\_\_, Deputy  
DOCUMENT NO. \_\_\_\_\_

**Northeast Cor. Sec. 27 T108N-R41W**

*Statement:*

- August 1861*      *Original Government Land Office Surveyor L. G. M. Fletcher records in his field notes, "built mound with trench pits, charred stake, per instructions."*
- Date Unknown*      *The Murray County Highway Engineer's Office records "Stone" and then they note witness ties to the Corner.*
- 1931*      *The Minnesota Highway Department shows in their field notes during construction of Highway 59, "Station 564+84.7, Sec. Cor., Brass Plug In place." The notes show the Section Corner being 0.2 feet West of the centerline tangent.*
- Aug. 30, 1989*      *Duane A. Bonnema, L.S. Reg. No. 14895, removed 4 inches of asphalt pavement and found a 3/4 inch diameter brass rod drilled into the old concrete road surface by the Minnesota Department of Transportation in 1931. Further digging was hampered by the concrete road pavement which contains an abundance of steel reinforcing rod. The brass rod appears to be the best available evidence of the corner location.*